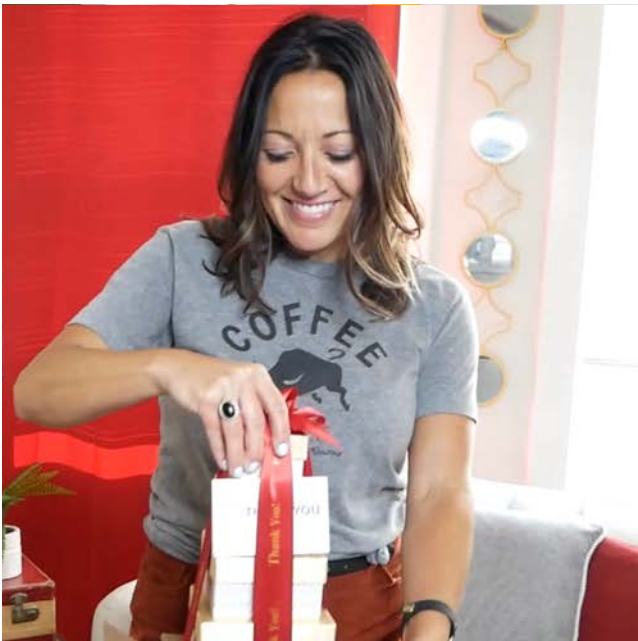


# BRANDED FOOD GIFT *Experience*





## Milk Chocolate Covered Oreo® Cookie

Real Oreo® cookies are drenched in smooth, premium milk chocolate, then drizzled with contrasting stripes to create a sweet flavor sensation.

### Item # CL1101

#### Price Per Unit

Quantity	100–299	300–599	600+
2C US \$	\$3.49	\$3.45	Quoted

- Minimum Quantity: 100
- Set-up Charge: \$50.00 (G)  
Exact Reorder Set-up Charge: \$20.00 (G)  
Blank Items: No Set-up Charge
- Oreo® Packet: 3.5" × 2.5"
- Price includes 4-color process imprint on 1.25-inch round label.
- Packaged 300 units per case.
- Individual shipments to destinations with sustained daytime temperatures over 74 degrees may require polystyrene insulated cartons and liquid ice packs at \$15.00 (G) per carton.
- Imprint area: 1"D; full bleed: 1.5"D; live area: 1.25"D.
- PMS Match: Because artwork is reproduced in 4-color process, an exact match to PMS color is not always possible and cannot be guaranteed.
- Shelf life: 3 months in a cool dry place.

Production Time: 5 working days.

### Contents

- Milk Chocolate Covered Oreo®, 1 oz.



## Albanese® Gummi Bears

Now you can get the same premium treats for your promotional needs that you are used to having in your gourmet food gifts! These deliciously fruity gummi bears are sure to delight everyone, harkening back to happy memories. Two-ounces in total.

### Item # CL1508

#### Price Per Unit

Quantity	100–299	300–599	600+
2C US \$	\$2.99	\$2.95	Quoted

- Minimum Quantity: 100
- Set-up Charge: \$50.00 (G)  
Exact Reorder Set-up Charge: \$20.00 (G)  
Blank Items: No Set-up Charge
- Snack Pack: 5.25" x 3.25"
- Price includes 4-color process imprint on 2-inch round label.
- Packaged 300 units per case.
- Imprint area: 1.75"D; full bleed: 2.25"D; live area: 2"D.
- PMS Match: Because artwork is reproduced in 4-color process, an exact match to PMS color is not always possible and cannot be guaranteed.
- Shelf life: 3 months in a cool dry place.

Production Time: 5 working days.

### Contents

- Albanese® Gummi Bears, 2 oz.





## Triple Mix Popcorn

This is the perfect blend of our lightly-salted, tender White Popcorn, premium Cheesecorn and buttery gourmet Caramel Corn.

**Item # CL1705**

**Price Per Unit**

Quantity	2C US \$
100+	<del>\$3.99</del> <b>\$3.59</b>

## Contents

- Triple Mix Popcorn, 2.5 oz.

- **Because of the special pricing on this gift, no other discount offers may be applied.**
- **This item is available in limited quantities and on a first-come, first-served basis.**
- Minimum Quantity: 100
- Set-up Charge: \$50.00 (G)  
Exact Reorder Set-up Charge: \$20.00 (G)  
Blank Items: No Set-up Charge
- Snack Pack: 8.5" x 4.5"
- Price includes 4-color process imprint on 2.75-inch round label.
- Packaged 50 units per case.
- Imprint area: 2.5"D; full bleed: 3"D; live area: 2.75"D.
- PMS Match: Because artwork is reproduced in 4-color process, an exact match to PMS color is not always possible and cannot be guaranteed.

Production Time: 5 working days.



## Full-Color Custom Sweeter Cards with Albanese® Gummi Bears

A *Sweeter Card* is a fully customizable greeting card and gourmet treat in one. Perfect for employee appreciation, onboarding, trade show giveaways (add company info and a QR code!), holidays, anniversaries, rebranding, events, and more! Choose from our library of premade designs and we'll add your logo and text and adjust colors, or create your own using a blank template. Sweeter Cards offer endless creative possibilities packed with a delicious treat: an array of Albanese® Gummi Bears, the #1 ranked gummy bear with the *just right* flavor and texture.

### Item # SC157FC

#### Price Per Unit

Quantity	36–95	96–239	240–479	480+
3C US \$	\$9.99	\$9.92	\$9.42	Quoted

- Minimum Quantity: 36
- Set-up Charge: \$50.00 (G)  
Exact Reorder Set-up Charge: \$20.00 (G)  
Blank Items: No Set-up Charge
- Greeting Card: 7.75" × 3.5" × 0.5"
- Price includes 4-color fully-customizable greeting card.
- **Individual shipments are available for a flat rate of \$7.95 (Z) each, shipped via USPS. The charge includes postage, a drop-ship charge, and an individual mailing carton. This flat-rate USPS shipment is not available when ice and insulation are required due to temperatures.**
- Individual shipments via UPS or FedEx (Third Party or Prepaid) instead of USPS flat rate are available upon request. In addition to shipping, the below charges apply:
  - Mailing carton (Item #IMC-SC) at \$2.00 (C).
  - Drop ship at \$4.00 (G) per carton.
- Albanese® gummi bears are suitable for ground shipment to destinations with sustained daily temperatures below 85 degrees.
- Ship Wt. 1 lb each; 21 lb per case of 72
- Bulk shipments will incur a charge of \$4.00 (G) per carton, plus shipping charges.

Production Time: 10 working days.

### Contents

- Albanese® Gummi Bears, 1/4 lb.



## Full-Color Custom Sweetener Cards with Homestyle Cookie Duo

A Sweetener Card is a fully customizable greeting card and gourmet treat in one. Perfect for employee appreciation, onboarding, trade show giveaways (add company info and a QR code!), holidays, anniversaries, rebranding, events, and more! Choose from our library of premade designs and we'll add your logo and text and adjust colors, or create your own using a blank template. Sweetener Cards offer endless creative possibilities packed with a delicious treat: two homestyle cookies, one each of oatmeal raisin and sugar.

### Item # SC181FC

#### Price Per Unit

Quantity	36–95	96–239	240–479	480+
3C US \$	\$9.99	\$9.92	\$9.42	Quoted

- Minimum Quantity: 36
- Set-up Charge: \$50.00 (G)  
Exact Reorder Set-up Charge: \$20.00 (G)  
Blank Items: No Set-up Charge
- Greeting Card: 7.75" × 3.5" × 0.5"
- Price includes 4-color fully-customizable greeting card.
- **Individual shipments are available for a flat rate of \$7.95 (Z) each, shipped via USPS. The charge includes postage, a drop-ship charge, and an individual mailing carton. This flat-rate USPS shipment is not available when ice and insulation are required due to temperatures.**
- Individual shipments via UPS or FedEx (Third Party or Prepaid) instead of USPS flat rate are available upon request. In addition to shipping, the below charges apply:
  - Mailing carton (Item #IMC-SC) at \$2.00 (C).
  - Drop ship at \$4.00 (G) per carton.
- Shelf life: 4 weeks in cool dry place.
- Ship Wt. 1 lb each; 14 lb per case of 72\*  
*\*Reflects dimensional weight used by UPS & FedEx*
- Bulk shipments will incur a charge of \$4.00 (G) per carton, plus shipping charges.

Production Time: 10 working days.

### Contents

- Oatmeal Raisin Cookie 1 oz.
- Sugar Cookie, 1 oz.



## Full-Color Custom Sweetener Cards with Sea Salt Caramel Chocolate Bar

A *Sweetener Card* is a fully customizable greeting card and gourmet chocolate bar in one. Perfect for employee appreciation, onboarding, trade show giveaways (add company info and a QR code!), holidays, anniversaries, rebranding, events, and more! Choose from our library of premade designs and we'll add your logo and text and adjust colors, or create your own using a blank template. Sweetener Cards offer endless creative possibilities and an extraordinary chocolate experience: our signature Chocolate Sea Salt Caramel Bar.

### Item # SC186FC

#### Price Per Unit

Quantity	36–95	96–239	240–479	480+
3C US \$	\$12.99	\$12.92	\$11.97	Quoted

- Minimum Quantity: 36
- Set-up Charge: \$50.00 (G)  
Exact Reorder Set-up Charge: \$20.00 (G)  
Blank Items: No Set-up Charge
- Greeting Card: 7.75" × 3.5" × 0.5"
- Price includes 4-color fully-customizable greeting card.
- **Individual shipments are available for a flat rate of \$7.95 (Z) each, shipped via USPS. The charge includes postage, a drop-ship charge, and an individual mailing carton. This flat-rate USPS shipment is not available when ice and insulation are required due to temperatures.**
- Individual shipments via UPS or FedEx (Third Party or Prepaid) instead of USPS flat rate are available upon request. In addition to shipping, the below charges apply:
  - Mailing carton (Item #IMC-SC) at \$2.00 (C).
  - Drop ship at \$4.00 (G) per carton.
- Individual shipments to destinations with sustained daytime temperatures over 74 degrees may require polystyrene insulated cartons and liquid ice packs at \$15.00 (G) per carton.
- Ship Wt. 1 lb each; 19 lb per case of 72
- Bulk shipments will incur a charge of \$4.00 (G) per carton, plus shipping charges.

Production Time: 10 working days.

### Contents

- Chocolate Sea Salt Caramel Bar, 3.5 oz.



## Homestyle Cookies in Red Premium Delights Gift Box

Packed with three homestyle cookies—Chocolate Chunk, Oatmeal Raisin, and Sugar—these fashionable packages make a great thank-you gift. Make a statement with the bright red gift boxes. As the finishing touch, we'll foil-stamp your imprint on the front of the box in your choice of gold or silver and complete the gift with a matching bow.

### Item # RPD133

#### Price Per Unit

Quantity	24–95	96–479	480–959	960+
3C US \$	\$16.99	\$16.95	\$16.89	Quoted

- Minimum Quantity: 24
- Set-up Charge: \$50.00 (G)  
Exact Reorder Set-up Charge: \$20.00 (G)  
Blank Items: No Set-up Charge
- Gift Box: 3.5" x 2" x 6"
- Price includes imprint foil-stamped in gold or silver on gift box.
- Imprint Area: 2" x 2"
- Individual shipments require a mailing carton (Item #IMC-PD) at \$2.00 (C).
- Drop shipments to one or more locations will incur a charge of \$4.00 (G) per carton plus shipping charges.
- Greeting cards available.
- Maximum size for enclosure cards: 5" x 3.25".
- Baked goods should be enjoyed within 4 weeks; or stored in a freezer for up to 3 months. Instructions for storage are included with each gift.
- Ship Wt. 1 lb each; 24 lb per case of 48\*

*\*Reflects dimensional weight used by UPS & FedEx*

Production Time: 5 working days. Orders utilizing individual drop shipment directly to recipients will be available for shipment 10 working days from factory's receipt of complete and accurate mailing list.

### Contents

- Chocolate Chunk Cookie, 1 oz.
- Oatmeal Raisin Cookie, 1 oz.
- Sugar Cookie, 1 oz.





## Simply Perfect with Albanese® Gummi Bears

When you need a small gift that packs a big flavor, look no further! This stylish silver box comes filled with one-half-pound of fruity, chewy gummi bears. We finish it with a band featuring your full color art. Select from our stock templates or customize it with your own design for a look that's completely unique.

### Item # SLS50157FC

#### Price Per Unit

Quantity	48-95	96-479	480+
2C US \$	\$19.99	\$19.95	Quoted

- Minimum Quantity: 48
- Set-up Charge: \$50.00 (G)  
Exact Reorder Set-up Charge: \$20.00 (G)  
Blank Items: No Set-up Charge
- Gift Box: 3.875" x 3.875" x 2.25"
- Price includes full color band.
- Individual mailing carton is included at no charge.
- Drop shipments to one or more locations will incur a charge of \$4.00 (G) per carton plus shipping charges.
- Greeting cards available.
- Maximum size for enclosure cards: 2.75" x 2.75".
- Albanese® gummi bears are suitable for ground shipment to destinations with sustained daily temperatures below 85 degrees.
- Ship Wt. 1 lb each; 37 lb per case of 48

Production Time: 10 working days. Orders utilizing individual drop shipment directly to recipients will be available for shipment 10 working days from factory's receipt of complete and accurate mailing list.

### Contents

- Albanese® Gummi Bears, 1/2 lb.



## Chocolate Sea Salt Caramels in Silver Premium Delights Gift Box

These Sea Salt Caramels are a harmonious blend of complex flavors—soft, buttery caramel, made with dairy fresh cream, is enrobed in rich, dark chocolate; then dusted with a delicate sprinkling of sea salt to create a bold flavor sensation. We are sure you will enjoy this exquisite treat. Each box contains 8 caramels. Silver gift boxes are foil-stamped with your logo in black and are complete with a silver bow.

### Item # SPD119

#### Price Per Unit

Quantity	24–95	96–479	480–959	960+
3C US \$	\$20.99	\$20.95	\$20.89	Quoted

- Minimum Quantity: 24
- Set-up Charge: \$50.00 (G)  
Exact Reorder Set-up Charge: \$20.00 (G)  
Blank Items: No Set-up Charge
- Gift Box: 3.5" x 2" x 6"
- Price includes imprint foil-stamped in black on gift box.
- Imprint Area: 2" x 2"
- Individual shipments require a mailing carton (Item #IMC-PD) at \$2.00 (C).
- Drop shipments to one or more locations will incur a charge of \$4.00 (G) per carton plus shipping charges.
- Individual shipments to destinations with sustained daytime temperatures over 74 degrees may require polystyrene insulated cartons and liquid ice packs at \$15.00 (G) per carton.
- Greeting cards available.
- Maximum size for enclosure cards: 5" x 3.25".
- Ship Wt. 1 lb each; 24 lb per case of 48\*

*\*Reflects dimensional weight used by UPS & FedEx*

Production Time: 5 working days. Orders utilizing individual drop shipment directly to recipients will be available for shipment 10 working days from the factory's receipt of a complete and accurate mailing list.

### Contents

- 8 Chocolate Sea Salt Caramels, 4.75 oz.



***We look forward to  
helping you with your  
Gourmet Food Gift selection!***